

APV Paraflow Super Sanitary

VEGA V028 R-16 SERIES PLATE HEAT EXCHANGER

SPECIFICATIONS

Ideally suited for a broad range of food processing duties where there is a tendency for the product to foul the heated surface or where large temperature induced viscosity changes are likely to occur. Four frame sizes holding up to a maximum of 500 plates (0.02" (0.6 mm) thick) are available with a port diameter of 2.5" (64 mm) making the Vega frames capable of processing up to 250 gal/min or 57 m³/h of product. Plates are available in a wide thickness range of .02" to .03" (0.5 to 0.8 mm) making them adaptable to a large range of process design pressures.



FRAME DESIGN FEATURES

- **Frame size:** 4 length variants in 125 plate increments up to maximum of 500 plates
- **Frame construction:** All solid stainless steel ANSI SS304
- **Tie bars:** Stainless steel with aluminum bronze nuts
- **Operating pressures:** 232 psi (16 bar) (186 psi ASME (13 bar ASME))
- **Connections:** 2.5" (64 mm)
- **Types:** Most sanitary types including Tri-clamp®, ACME (bevel seat), CB I-Line and plain stub end for welding. Industrial 2.5" (64 mm) L/T lap joint and weld neck flanges
- **Finish:** Frame - glass blast. Product contact surfaces, to 150 grit finishing, meeting 3-A
- **Operating temperatures:** Up to 350°F (177°C) depending on gasket material
- **Maximum flow rate:** 250 gal/min or 57 m³/h

PLATE DESIGN FEATURES

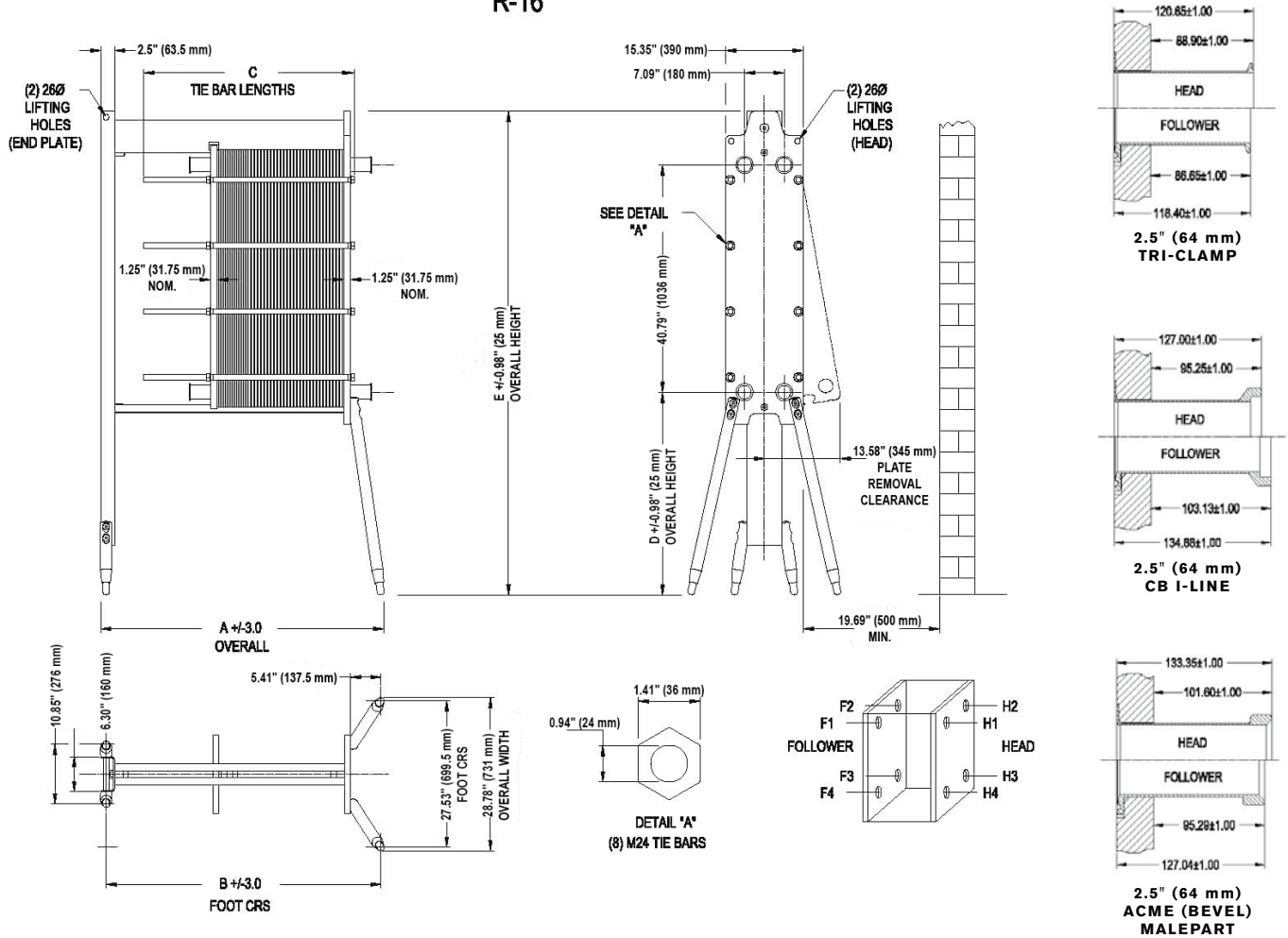
- **Length variant:** Vega 028 maximizes process efficiency for multi-pass operation within a small, compact frame
- **Heat transfer area/plate:** 2.96 ft² (0.27 m²)
- **Wide gap "R5 type" heat transfer area:** To reduce effect of pressure increase due to fouling and provide for long run times while still maintaining high thermal efficiency
- **Diagonal flow:** Ensures uniform temperature time treatment of the product and allows for processing of high viscosity products
- **Large, free flow port inlet area:** Large entry area means reduced chance of port clogging with product. Spherical food particles up to 0.1" (2.5 mm) diameter can be processed
- **Low number of contact points:** 80% fewer contact points to hang up product or create cleaning problems than conventional chevron-type plates
- **Corner interlock:** Vega plates possess a patented, effective, metal-to-metal alignment mechanism. Plate packs can be assembled rapidly without misalignment, which makes for rapid, trouble-free turnaround
- **Easy clip gaskets:** All Vega gaskets employ a patented glue-free snap-in design, which makes for rapid refit and pack turnaround
- **Plate materials:** Stainless steel, titanium and other corrosion-resistant materials
- **Gasket materials:** Nitrile, EPDM and Viton® using the patented, EasyClip, adhesive-free snap-in gasket retention system. Fully stuck gasket versions also available
- **Plate liquid capacity/fluid channel:** 0.27 gal (1.02 L)

ADDITIONAL FEATURES

- Optional stainless steel protective plate pack shroud
- Optional ASME code stamp

APV PARAFLOW SUPER SANITARY VEGA V028 R-16 SERIES PLATE HEAT EXCHANGER
DIMENSIONS

R-16



FRAME SIZE	END SUPPORT FOOT TYPE	NET WEIGHT LB (KG) (NO PLATES)	MAX FRAME CAPACITIES (0.6 MM PLATE)		MEASUREMENTS IN (MM)					
			MAX PLATE QUANTITY	MAX PLATAGE DIMENSIONS IN (MM)	A	B	C	D	E	
1	SINGLE FOOT NON ADJ	TALL	805 (365)	96	25 (628)	48 (1,210)	45 (1,147)	33 (850)	36 (924)	87 (2,205)
		SHORT	734 (333)	96	25 (628)	44 (1,127)	42 (1,061)	33 (850)	14 (353)	64 (1,634)
2	SINGLE FOOT NON ADJ	TALL	849 (385)	233	57 (1,453)	80 (2,035)	78 (1,972)	63 (1,600)	36 (924)	87 (2,205)
		SHORT	778 (353)	233	57 (1,453)	77 (1,953)	74 (1,890)	63 (1,600)	14 (353)	64 (1,634)
3	DUAL BALL FOOT ADJUSTABLE	TALL	957 (434)	350	85 (2,153)	108 (2,750)	107 (2,708)	94 (2,400)	36 (924)	87 (2,205)
		SHORT	899 (408)	350	85 (2,153)	105 (2,667)	103 (2,626)	94 (2,400)	14 (353)	64 (1,634)
4	DUAL BALL FOOT ADJUSTABLE	TALL	1,060 (481)	475	114 (2,903)	138 (3,500)	136 (3,458)	81 (3,050)	36 (924)	87 (2,205)
		SHORT	1,003 (455)	475	114 (2,903)	135 (3,417)	133 (3,376)	81 (3,050)	14 (353)	64 (1,634)

Based in Charlotte, North Carolina, SPX FLOW, Inc. (NYSE: FLOW) is a multi-industry manufacturing leader. For more information, please visit www.spxflow.com



SPX FLOW 611 Sugar Creek Road Delavan, WI 53115

P: (262) 728-1900 or (800) 252-5200 E: answers.us@spxflow.com

SPX FLOW, Inc. reserves the right to incorporate our latest design and material changes without notice or obligation.

Design features, materials of construction and dimensional data, as described in this bulletin, are provided for your information only and should not be relied upon unless confirmed in writing. Please contact your local sales representative for product availability in your region. For more information visit www.spxflow.com.

The green "s" and "x" are trademarks of SPX FLOW, Inc.

ISSUED 12/2016 1033-01-08-2008-US COPYRIGHT © 2016 SPX FLOW, Inc.