

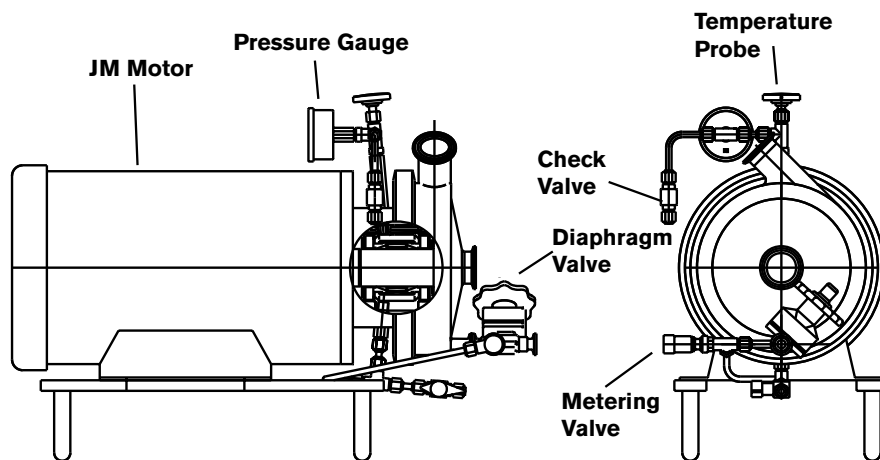
WFI (Water for Injection)

CENTRIFUGAL PUMPS

Water for Injection

Adapted from the rugged, precision S200 Series design for pumping water for injection; modifications to seal area prevent leakage of contaminants into pumpage. Although designed for high purity, pyrogen-free fluid used in pharmaceutical products, this pump is ideal for pumping high purity, deionized water, such as that used to rinse and cleanse electronic integrated circuits.

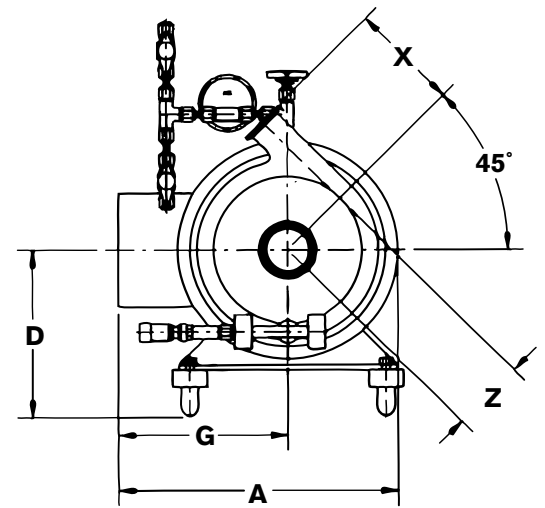
- All wetted parts 316L stainless steel with 20 Ra (240 grit) finish; 15 Ra (180 grit) and electro-polish optional
- Single and double seal options: John Crane Type 9, Chesterton 241, silicon carbide, tungsten carbide, Viton, EPDM
- Optional factory-installed flush system (shown) with pressure, temperature, flow-rate controls



Mechanical Specifications

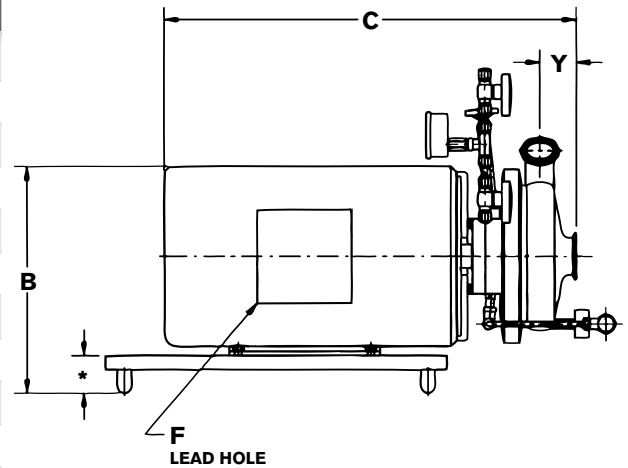
FLUID HEAD

MODEL	INLET in (mm)	OUTLET in (mm)	X in (mm)	Y in (mm)	Z in (mm)
S2045	1.5 (38)	1.5 (38)	3.88 (98)	1.81 (46)	2.25 (57)
	2.0 (51)	1.5 (38)	3.88 (98)	1.81 (46)	2.25 (57)
S2065	2.5 (64)	2.0 (51)	4.94 (125)	2.68 (68)	2.88 (73)
S2065LV	1.5 (38)	1.5 (38)	4.94 (125)	2.43 (62)	3.13 (79)
	2.0 (51)	1.5 (38)	4.94 (125)	2.43 (62)	3.13 (79)
	2.5 (64)	1.5 (38)	4.94 (125)	2.43 (62)	3.13 (79)
S2065HV	3.0 (76)	2.0 (51)	4.94 (125)	3.04 (77)	2.88 (73)
S2075	3.0 (76)	1.5 (38)	6.69 (170)	2.70 (69)	4.32 (110)
S2085	3.0 (76)	2.5 (64)	5.75 (146)	2.93 (74)	4.91 (125)
	4.0 (102)	2.5 (64)	5.75 (146)	2.93 (74)	4.91 (125)
S2085LV	2.0 (51)	1.5 (38)	6.69 (170)	2.70 (69)	4.32 (110)
S2092	3.0 (76)	2.0 (51)	6.64 (169)	3.09 (78)	4.62 (117)



UNIT WIDTH AND HEIGHT

FRAME	A in (mm)	B in (mm)	D in (mm)	F in (mm)	G in (mm)
145JM	8.56 (218)	7.87 (200)	4.5 (114)	.50 (13)	5.25 (133)
182JM	9.81 (249)	9.44 (240)	5.50 (140)	.75 (19)	5.87 (149)
184JM	9.81 (249)	9.44 (240)	5.50 (140)	.75 (19)	5.87 (149)
213JM	12.18 (309)	11.06 (281)	6.25 (159)	.75 (19)	7.38 (187)
215JM	12.18 (309)	11.06 (281)	6.25 (159)	.75 (19)	7.38 (187)
254JM	14.68 (373)	13.00 (330)	7.25 (184)	1.00 (25.4)	8.94 (227)
256JM	14.68 (373)	13.00 (330)	7.25 (184)	1.00 (25.4)	8.94 (227)
284JM	18.87 (2250)	14.63 (372)	8.00 (203)	1.50 (38)	12.25 (311)
286JM	18.87 (2250)	14.63 (372)	8.00 (203)	1.50 (38)	12.25 (311)
324JM	20.75 (527)	16.56 (421)	9 (229)	1.50 (38)	13.18 (335)
326JM	20.75 (527)	16.56 (421)	9 (229)	1.50 (38)	13.18 (335)



Based in Charlotte, North Carolina, SPX FLOW, Inc. (NYSE: FLOW) is a multi-industry manufacturing leader. For more information, please visit www.spxflow.com

SPXFLOW

SPX FLOW 611 Sugar Creek Road Delavan, WI 53115

P: (262) 728-1900 or (800) 252-5200 F: (262) 728-4904 or (800) 252-5012 E: wcb@spxflow.com

SPX FLOW, Inc. reserves the right to incorporate our latest design and material changes without notice or obligation.

Design features, materials of construction and dimensional data, as described in this bulletin, are provided for your information only and should not be relied upon unless confirmed in writing. Please contact your local sales representative for product availability in your region. For more information visit www.spxflow.com.

The green "s" and "x" are trademarks of SPX FLOW, Inc.

ISSUED 08/2016 FH-1715 COPYRIGHT © 2016 SPX FLOW, Inc.